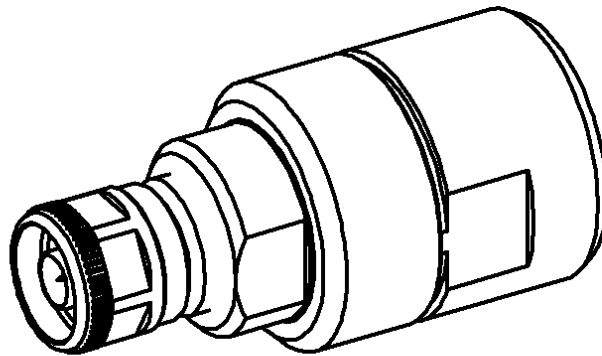
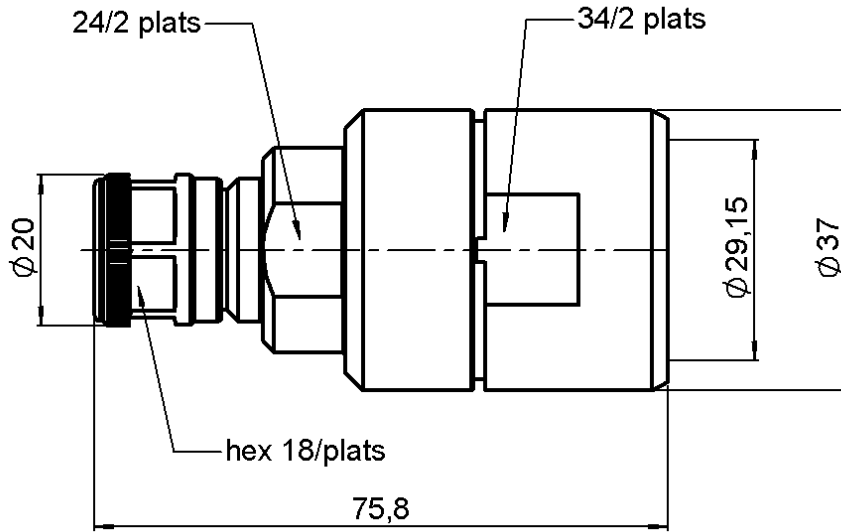


**STRAIGHT PLUG EZ FIT TYPE**

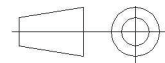
**7/8" CORRUGATED CABLE**

**R161.033.020**

Series : N



All dimensions are in mm.



COMPONENTS	MATERIALS	PLATINGS ( $\mu\text{m}$ )
BODY	BRASS	BBR 0.5 OVER SILVER 3
CENTER CONTACT	BERYLLIUM COPPER, BRASS	SILVER 5 PASSIVATED OVER COPPER 0.5
OUTER CONTACT	BRASS	BBR 0.5 OVER SILVER 3
INSULATOR	PTFE	
GASKET	SILICONE RUBBER	
OTHERS PARTS	BRASS	BBR 0.5 OVER SILVER 3
-	-	-
-	-	-

Issue : 0441 A

In the effort to improve our products, we reserve the right to make changes judged to be necessary.



**RADIALL**®

**STRAIGHT PLUG EZ FIT TYPE**

**R161.033.020**

**7/8" CORRUGATED CABLE**

Series : N

**PACKAGING**

Standard	Unit	Other
<b>1</b>	-	<b>Contact us</b>

**SPECIFICATION**

**ELECTRICAL CHARACTERISTICS**

Impedance		<b>50</b> Ω
Frequency		<b>0-11</b> GHz
VSWR	<b>1.25**</b> +	<b>0.000</b> x F(GHz) Maxi
Insertion loss		<b>0.048</b> √F(GHz) dB Maxi
RF leakage	- (	<b>NA</b> - F(GHz)) dB Maxi
Voltage rating		<b>1400</b> Veff Maxi
Dielectric withstanding voltage		<b>2500</b> Veff mini
Insulation resistance		<b>5000</b> MΩ mini

**CABLE ASSEMBLY**

Stripping	a	b	c	d	e	f
mm	26.0	0.00	0.00	0.00	0.00	0.00

Assembly instruction :

Recommended cable(s)  
M 1474 Z  
LDF5-50A-7/8"  
LCF 7/8" Cu2Y

Cable retention

- pull off	<b>500</b> N mini
- torque	<b>NA</b> N.cm

**MECHANICAL CHARACTERISTICS**

Center contact retention		
Axial force – Mating end	<b>68</b>	N mini
Axial force – Opposite end	<b>68</b>	N mini
Torque	<b>NA</b>	N.cm mini

**TOOLING**

Part Number	Description	Hexagon
R282.011.060	STRIPPING TOOL FOR CABLE 7/8 CORRUGATED	-

Recommended torque		
Mating	<b>170</b>	N.cm
Panel nut		N.cm
Clamp nut	<b>2500</b>	N.cm
A/F clamp nut	<b>33.900</b>	mm

**OTHERS CHARACTERISTICS**

\*IMP3= -112dBm à 1.8GHz (2x20W)  
\*\*ROS : 1.06 max <2.5GHz  
Watertightness : IP68

Mating life	<b>500</b>	Cycles mini
Weight	<b>223.700</b>	g

**ENVIRONMENTAL**

Operating temperature	<b>-55/+155</b>	° C
Hermetic seal	<b>NA</b>	Atm.cm3/s
Panel leakage	<b>NA</b>	

Issue : 0441 A

In the effort to improve our products, we reserve the right to make changes judged to be necessary.

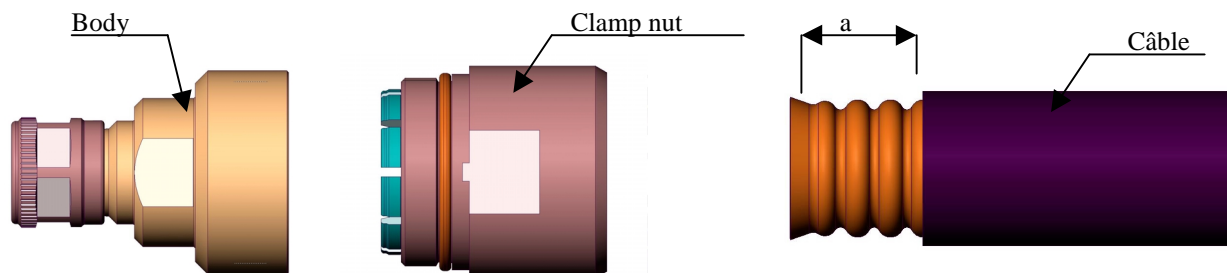


**STRAIGHT PLUG EZ FIT TYPE**

**7/8" CORRUGATED CABLE**

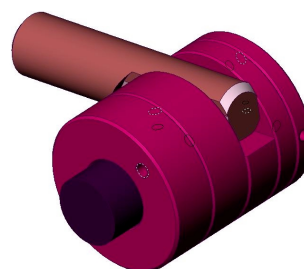
**R161.033.020**

Series : N



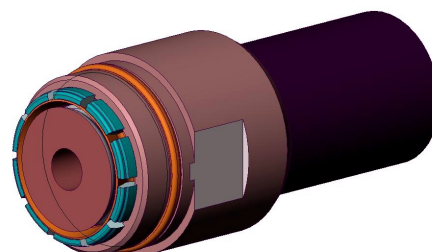
**1) STRIPPING OFF THE SHEATH**

Cut the front extremity of the cable on the summit of a ring with a hacksaw ( "a" dimension ).  
 Raise the handle and push the cable stops until it.  
 Lowered the handle using a light pressure on it.  
 Hold the handle down , and turn the tool ( of approximately ¼ of tour) in the opposite direction , while pulling gently on the cable in order to release pieces of the cable cut.  
 Raise the handle, slide the cable out and remove loose pieces of cable.  
 Split the sheath with a cutter, perpendicular to the previously split.  
 Remove the sheath.



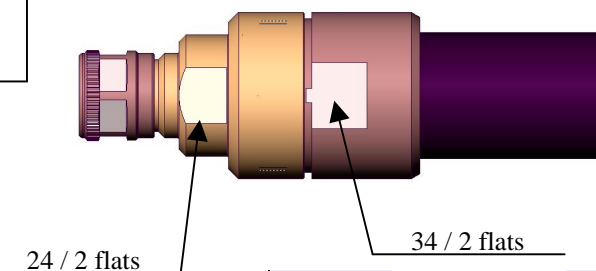
**2) CABLE MOUNTING**

Slide the clamp device over the cable , until the elastic part snap into the first groove of the outer conductor .  
 Push forward the nut of the clamp device until it stops against the elastic part.



**3) CABLE - CONNECTOR ASSEMBLY**

Screw the connector on the nut of the clamp device.  
 Recommended mating torque: 2500N.cm



Issue : 0441 A

In the effort to improve our products, we reserve the right to make changes judged to be necessary.

